

ClearStream® RECYCLING SYSTEMS

Recycling for REAL™

2020 PRODUCT CATALOG



SortMax™ helps Residents and Visitors RECYCLE RIGHT.

Learning to RECYCLE RIGHT is National Environmental Goal

The Recycling industry has launched a massive educational campaign called Recycle Right. Although the primary target of the campaign is curbside collection, it is estimated that less than 15% of public space venues offer an effective recycling program.



Recycling for REAL™ with PORTABLE CONTAINERS Helps Residents and Visitors RECYCLE RIGHT.

When visitors and attendees see REAL™ recyclables in a clear bag, they don't need to think or read about it. They add their own right on top.

Albert Einstein said *“Setting an example is not the main means of influencing another, it is the only means.”* Doug McKenzie-Mohr, *Fostering Sustainable Behavior*, page 73.



SortMax™ is a PERMANENT INDOOR COLLECTION STATION to help visitors sort Recycling for REAL™.

SortMax™ is a custom indoor recycling station that can be set up to collect 2, 3 or 4-sorts. Each SortMax™ lid opening collects only one stream of material. With less than 10% contaminaton, there is no need for additional processing. Already separated marketable recyclables are consolidated and transferred directly to a local recycling center.

Customize your SortMax™ as a 2-Sort, 3-Sort or 4-Sort Station

2-Bin Sort

To order a SortMax-2, choose:

- Two standard Hot Stamped lids.
- Four rolls of 40" x 45" bags. Five per roll, Total 20 bags.



3-Bin Sort

To order a SortMax-3, choose:

- One Hot Stamped lid. One Dual-Sort lid.
- Two decals per opening, Total 4 decals.
- Ten 40" x 45" bags and twenty 30" x 45" bags, Total 30 bags.



4-Bin Sort

To order a SortMax-4, choose:

- Two Dual-Sort lids.
- Four different decals (Total 8)
- Eight rolls of 30" x 45" bags. 5 per roll, Total 40 bags.



All 3 stations are priced the same! See offer on Page 16

Assembly:

- Lids snap on to the baglock at all four corners.
- Rubber Mat provides protection from spills.

Shipping:

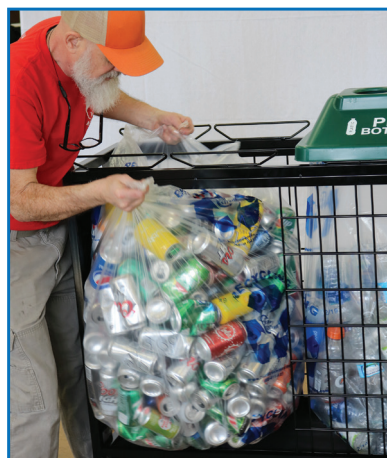
- SortMax™ ships unassembled to reduce shipping and carbon footprint costs.
- SortMax™ can be shipped either as a ground package or LTL with up to 8 cartons on a skid.

See Order Form on page 8 or visit our website at www.clearstreamrecycling.com



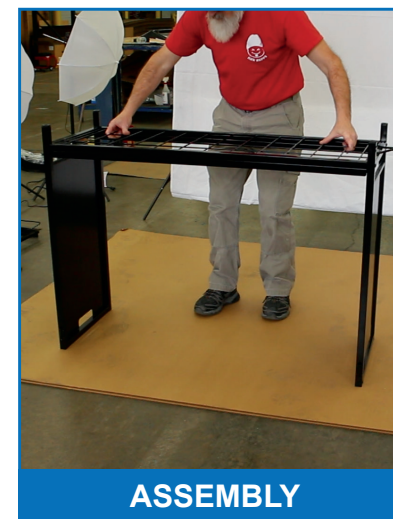
PATENTED BAGLOCK

Secures both 25 and 40 gallon bags



EASY SERVICING

Open the rear grid and slide the full bag out through the opening, eliminating vertical lifting.



ASSEMBLY

Assemble SortMax™ with 8 screws in 10 minutes by one person

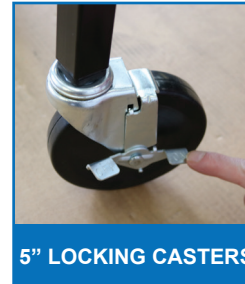
Permanent SortMax™ Recycling Stations Features & Benefits

Great Fit:

The 17.25" width makes **SortMax™** a great fit for narrow locations. Examples included entryways, security stations, cafeterias, hallways, lunch rooms, lounges, tradeshow aisles etc. (48" x 17.25" x 42.25")

Mobility:

SortMax™ uses 5-inch industrial locking casters for easy transport with foot brake for securing the **SortMax™**.



5" LOCKING CASTERS

- Roll **SortMax™** recycling stations into high-traffic areas like fairs, sporting events, and assemblies to capture recyclables.
- Roll **SortMax™** to the back of the house to consolidate clean recyclables for shipment to end-use markets.



End Signs (SPONSOR THIS SPACE) increase branding opportunities

Locking Block:

SortMax comes with a locking block that connects two or more **SortMax™** into a rigid solid waste station. It takes only 30 seconds to connect 2 **SortMax™** together with a locking block.

- Locking 2 **SortMax™** stations together provides additional sorting opportunities.



LOCKING BLOCK



MATERIAL CART

Removing the lids and bags from your **SortMax™** permits collecting corrugated and other bulky materials.

Each **SortMax™** comes with a 3/8" steel frame for banners or signs.

Two **SortMax™** locked together can display an 8.5' x 3' banner that is 25 ft.² (total 50 ft.² double sided).

Reward your Sponsors with 3 Types of Displays on SortMax™ Stations.

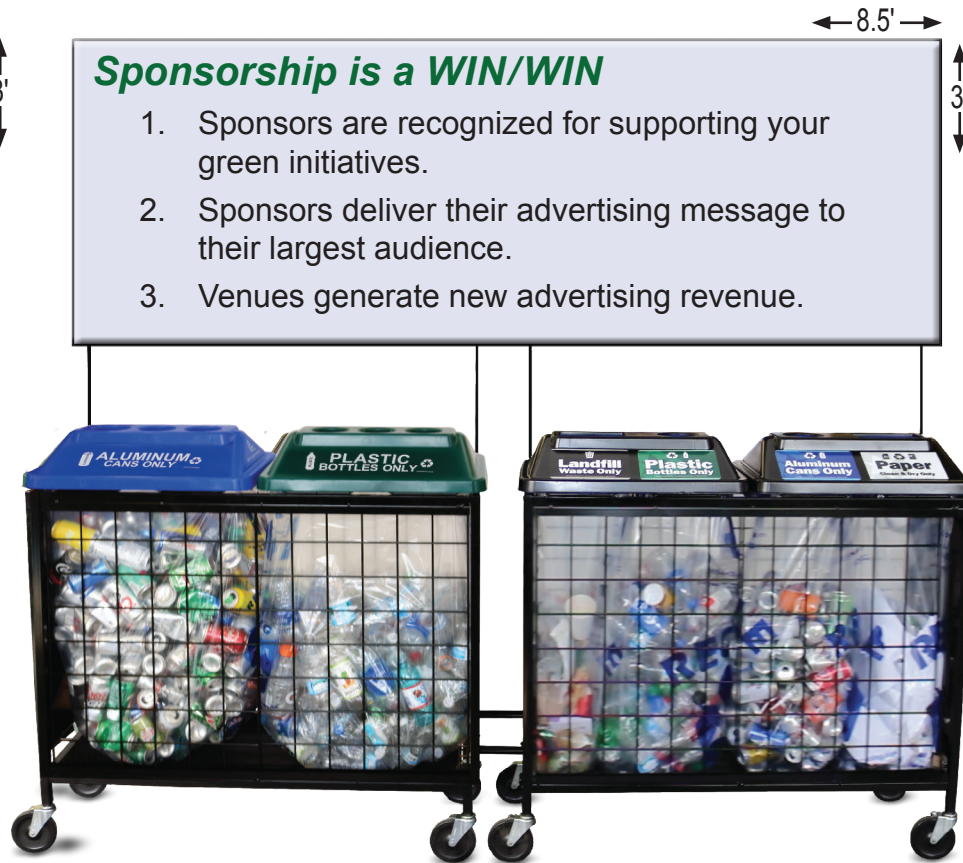
SORTMAX™ SINGLE BANNER

A SortMax™ with a single 4' x 3' banner displays 12 ft.² [total 24 ft.² two sided]. Indoor Use Only.



SORTMAX™ DOUBLE BANNER

A locking block connects 2 SortMax™ containers into a rigid recycling station to display a double banner. The double wide, 8.5' x 3' banner creates 25 ft.² [total 50 ft.² two sided] of display space. Indoor Use Only.



SORTMAX™ BILLBOARD SIGNS

Two 21" x 30" Billboards signs are attached to 2 pairs of hooks on the top bar. Signs swing freely in the wind, and can be used indoors or outdoors. Two 21" x 30" Billboard create 8.75 ft.² [17.5 ft.² two sided] of display space.



Advertising displays in high-traffic areas are a proven way to thank and acknowledge Sponsors.

Shared Equipment Components for all ClearStream Products

Use Hot Stamped Lids for all 40-gallon Bins

ClearStream Hot Stamped Lids

3-HOLE BEVERAGE LID:

(Three 4" circular openings)

- BOTTLES & CANS ONLY – blue or green
- ALUMINUM CANS ONLY – blue
- PLASTIC BOTTLES ONLY – green

WIDE MOUTH LID:

(one 16" X 4.5" slot)

- RECYCLABLES – blue single stream
- COMPOSTABLES – green
- TRASH ONLY – black

ADDITIONAL LIDS:

- PAPER ONLY - 16" x 2.25" slot – green
- CUSTOM – create your own custom lid



LOCKING LID - Snaps on to Frame at all four corners.

Use SortMax™ Dual-Sort and Decals for 25-Gallon Bags.



Black

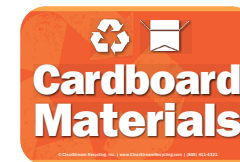
OR



Blue

Dimensions :

- 4.5" circular opening and 7.375" x 4.5" rectangular opening
- Each opening requires 2 identical decals
- Custom decals available



Clearstream waste and recycling bags are a blend of metallocene and “barefoot” LDPE resin with a minimum of 10% PCR.



CONTACT US TO CHOOSE A FREE ROLL OF 5 SAMPLE BAGS OF YOUR CHOICE.

40-Gallon Bags



ALL 40-GALLON BAGS ARE 40" x 45".

Best Seller



RECYCLING BAGS
Clear with blue double-sided print, 1.1 mil, 100 or 200/case.

Migration 25% PCR



RECYCLING BAGS
100/case, 25% PCR, 1.5 mil.

Heavy Duty



RECYCLING BAGS
Clear with green print, 1.5 mil, 100/case.

Trash Only, Clear



TRASH BAGS
1.1 mil clear trash bags with black print, 100 or 200/case.

Trash Only, Black



TRASH BAGS
1.25 mil black bags with white print, 100/case.

Translucent Green



COMPOSTABLE BAGS
42" x 48", .85 mil, 10 bags per roll, 80/case, Translucent green.



QUICK-DRAW 50-Gallon Bags

Attach a bag instantly by wrapping the draw tape around the four corners and pulling down. Bags are serviced by cinching the draw tape which eliminates spillage.

REQUEST A FREE ROLL of QUICK-DRAW BAGS

25-Gallon Bags

ALL 25-GALLON BAGS ARE 30" x 45", 1.1 mil, 200 per case.



1.1 mil
Clear / Blue
print



1.1 mil
Blue tint /
Black print



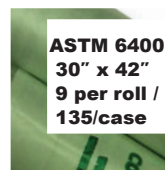
1.1 mil
Green tint /
Blue print



1.1 mil
Black /
White print



1.1 mil
Clear /
Black print



.85 mil
Translucent
Green

Custom Printed Bags



Order Custom Printed Bags!

- One or two sided print
- Free artwork and shipping
- Minimum quantity one pallet



How to order Custom SortMax™ Recycling Stations.

VISIT our website to download the PDF order form @ www.clearstreamrecycling.com or call Sales @ 855-411-4321

STEP ONE

Order Form Directions

1. Fill out the SortMax™ order form located on our website at www.clearstreamrecycling.com
2. After selecting the number of collection streams and filling in the customizable options for your SortMax™, Download/Save a copy of your order form for your records.
3. Attach your saved order form to an e-mail. Please add your bill & ship to information in the body of the e-mail for your quote/order.
4. E-mail your completed order form and quote/order information to sales@clearstreamrecycling.com.
5. A sales rep will respond back within 1 business day to confirm receipt of the submitted order form.



Contact our Sales Team

For Information, offers, quotes and orders.

Call: 855-411-4321

Email: sales@cs-rec.com

ClearStreamRecycling.com



CHOOSE your SortMax™ with 2, 3 OR 4 sorts

STEP TWO

2 - Sort Station

20 Bags

Lids

- Hot Stamped Lid # _____
- Hot Stamped Lid # _____

4 Rolls of 40 Gallon Bags

- 2 Rolls of 5 Bags # _____
- 2 Rolls of 5 Bags # _____

3 - Sort Station

30 Bags

Lids

- Hot Stamped Lid # _____
- Black DualStream Lid INCLUDED

Decals

- Decals ★ # _____
- Decals ★ # _____

Bags

- 2 Rolls of 25 Gal. Bags # _____
- 2 Rolls of 25 Gal. Bags # _____
- 2 Rolls of 40 Gal. Bags # _____

★ Each opening requires 2 identical decals

4 - Sort Station

40 Bags

Lids

- 2 Black DualStream Lids INCLUDED

Decals

- Decals ★ # _____
- Decals ★ # _____
- Decals ★ # _____
- Decals ★ # _____

8 Rolls of 25 Gallon Bags

- 2 Rolls of 5 Bags # _____
- 2 Rolls of 5 Bags # _____
- 2 Rolls of 5 Bags # _____
- 2 Rolls of 5 Bags # _____

★ Each opening requires 2 identical decals

ENTER the product code from the Main Menu into the matching color coded line item (# _____) to complete your order.

STEP THREE

Product Codes Main Menu

HOT STAMPED LIDS		ITEM #
	BOTTLES & CANS ONLY	L1
	ALUMINUM CANS ONLY	L2
	PLASTIC BOTTLES ONLY	L3
	RECYCLABLES	L4
	COMPOSTABLES	L5
	TRASH ONLY	L6
	PAPER ONLY	L7

BLACK DUALSTREAM LID DECALS: 2 PER OPENING		ITEM #
	ALUMINUM CANS ONLY	D1
	PLASTIC BOTTLES ONLY	D2
	PLASTIC BAGS & FILM ONLY	D3
	COMPOST ORGANIC	D4
	PAPER CLEAN & DRY ONLY	D5
	BOTTLES & CANS ONLY	D6
	LANDFILL WASTE ONLY	D7
	CARDBOARD MATERIALS	D8

25 GALLON BAGS PRINTED 30" x 45" 5 PER ROLL		ITEM #
	Clear/RECYCLING	25-1
	Blue/RECYCLING	25-2
	Green/RECYCLING	25-3
	Black/TRASH ONLY	25-4
	Clear/TRASH ONLY	25-5
	Compostable Bags	Call
40 GALLON BAGS PRINTED 40" x 45" 5 PER ROLL		ITEM #
	RECYCLING	40-1
	Black/TRASH ONLY	40-2
	Clear/TRASH ONLY	40-3
	Compostable Bags	Call

WeatherMax are Year-Round Permanent Outdoor Containers

WeatherMax is available as a **Single-Sort** or **Dual-Sort** Container

WeatherMax is at home in public outdoor spaces - parks, stadiums, streetscapes, parking lots, and more—everywhere dual sorted materials need to be Recycled for **REAL™**.

- Choose decals to target the materials to be recycled. (arrow pointing to decals)
- Cabinet and door is zinc plated, then powder coated with a super durable color of your choice.
- Recycled content exceeds 50%.
- WeatherMax is lockable. Levelers can be removed for permanent mounting.



DUAL-SORT

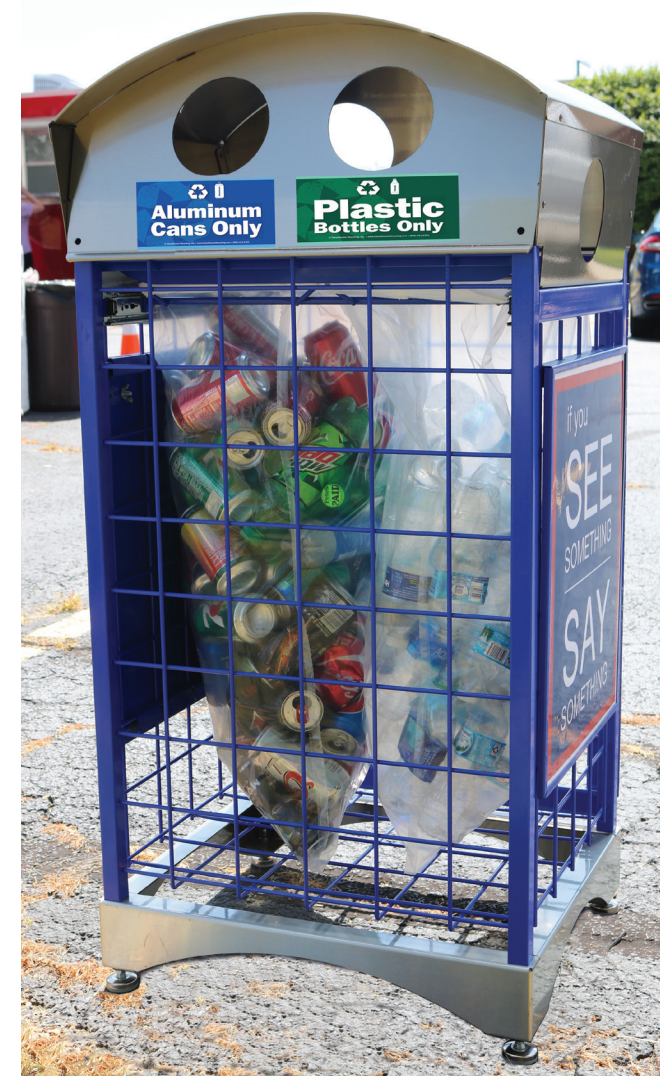


SINGLE-SORT

Both Dual-Sort and Single drawers slide out for easy servicing of bags.



Optional WeatherMax 16" x 20" sign kits are sold in pairs.



WeatherMax has a stainless steel top and base for maximum protection against rust in outdoor environments.

Sort Recycling for REAL™ with ClearStream Portable Products



ClearStream... the CLEAR Choice®!

ClearStream 5-Pack Cases come ready to use with 5 matching frames, lids and bags. Sidekicks come in 5-Packs with your choice of 5 lids shipped separately. Eight different models are stocked and ready to ship.

For 15 years, ClearStream portable bins have helped venues create sustainable collection in outdoor public spaces.

1. Sorting Recycling for REAL eliminates post sorting; materials are delivered to local recycling processors and disposal costs are avoided.
2. Volunteer organizations often take on the collection of trash and recycling at events, reducing costs for everyone.
3. Transporters that hold 20 or 25 frames and stacking lids make it easy to transport, set up, service and store portable ClearStreams.
4. Clear bags are easily monitored from a distance, preventing overflows and providing the opportunity to **SEE Something, SAY Something**. The Department of Homeland Security advises: “Additionally, install clear trash receptacles so that staff can better monitor items that go into the bins.” —**DHS, Bomb Threat Guidance**
5. Rewarding your Sponsors with EXCLUSIVE displays on BillBoards and Banners in high-traffic areas provides new revenue opportunities.
6. **Our Customers say it best:** *“It’s about education, and this demonstrates to participants that recycling is important and that things should not be wasted. Collecting data is very important, and helpful in evaluating your program. It may seem exceptional, but we found less than 2% of trash or non-recyclables in the Clearstream units, and less than 5% recyclables thrown away into the trash containers. When used correctly, Clearstream is very effective for successful recycling and waste conversion at large events. People who attend notice the efforts and value the improvement to community events that we hold in the City of Dubuque.”* —**Paul Schultz, Solid Waste Management Supervisor – City of Dubuque, Iowa.**

ClearStream Portable Recycling Centers



SIDEKICKS

INSTANT RECYCLING STATIONS – Attaching Sidekick to a fence, rolling cart or barrel transforms your trash receptacles into a dual-bin recycling station. It also can be mounted permanently to walls in secure areas. Sidekicks come in five-pack with your choice of five matching lids shipped separately.



ZERO WASTE STATION

CLEARSTREAM COLLECTS AND PROTECTS – Zero Waste Station kits ship with 3 lids that collect **COMPOSTABLES, RECYCLABLES** and **TRASH ONLY**, a matching blue, green and black frame, 30 bags, 2 connectors and 3 sleeved Billboard sign kits. Printed Signs sold separately.

Connectors Set-up Recycling Stations



Green Barriers Collect & Protect

2-bin connectors lock multiple bins together, creating display space, managing traffic at entrances and exits and keeping containers in uniform order.



Billboards Help Your Visitors RECYCLE RIGHT.

Customer Favorite: Billboards with Sleeves



Both large (21" x 30") and standard (20" x 12") Billboard sign hangers insert into slots welded to the frame. They are shipped five [5] per case.

Both large and small Billboard hangers insert into slots which are welded to the frame.

Signs have predrilled holes which slide over hooks on the hanger to hold the signs in place.



SWANA Zero Waste Collection, Baltimore Convention Center, 2018.

Printed Standard Billboards 21" X 12"

BLANK BILLBOARD WITH SLEEVE

A stiff backer with predrilled holes is inserted into the 20" x 12" sleeve. Signs (20" x 11") slide into the sleeves on both sides. Customers can print their own artwork.



LARGE BILLBOARDS (21" x 30") can be hung on the back and/or front from baglocks for both indoor and outdoor use.



LARGE BILLBOARDS 21" x 30" are designed for both indoor and outdoor use.

For optimum use, bins can be locked into 4-bin Quadpods with a podzilla connector. A Quadpod provides a wide, stable base that is approximately 4' x 4'. The Quadpod accommodates either standard 20" x 11" Billboard signs or large 21" x 30" hanging signs.

All Transporters can be shipped assembled and ready to use for an additional charge

ClearStream Transporters are the efficient, labor saving way to transport, set up, service and store bins between uses. A loaded Transporter with ClearStream bins and supplies provides a turnkey Recycling for REAL™ system.



Vertical Transporter-2 (TP-2)

Mobile cart is a turnkey solution for efficient recycling at public space events. Great new features include:

- TP-2 hangs 20 frames and 20 lids vertically, which makes it easier and faster to hang frames and lids.
- Rugged construction and all-terrain wheels provide many years of service.
- A handle for easier maneuvering which also serves as a shelf for Billboard sign frames.
- A welded basket holds bags, connectors, cleaning supplies, personal items, etc.

Horizontal Transporter (TP-1)

The original Transporter (TP-1) holds 25 frames and lids. The frames are stacked horizontally, one on top of the other. It is normally shipped requiring assembly. TP-1 comes in blue or black.



Shuttlecraft Transporter



DualMax SHUTTLECRAFT is a permanent wheeled container that comes with two bins of your choice. The Shuttlecraft can also store and provide mobility for an additional 10 folding frames and lids. This provides a total of six 2-bin recycling stations to service small to medium events.

Public Space Recycling at the Crossroads?

Many communities have long-standing traditions of public space recycling after annual events. Great recycling creates a broad consensus of citizens who take pride in greening their community celebrations. However, waste haulers and community officials are experiencing challenges because of problems relating to a lack of markets. They cannot get the material clean enough, they can not afford to handle it twice, they don't have the bins, the money etc.



Photo Courtesy of Keep Northern Illinois Beautiful (KNIB)



Consider the LEND-A-BIN solution.

Hundreds of Clearstream LEND-A-BIN programs have been funded. The program gives public agencies and local governments the opportunity to reduce expenses while expanding recycling services to their surrounding communities.

The bins are borrowed by stakeholders from multiple venues and events. Organizations reserve the bins “as easily as checking out a library book.” The responsibility of the borrowing organization is providing the labor to collect the recyclables [and often the trash], keep the open spaces clean and make sure that the recyclables reach their end use markets. **Please Download our Free Lend-a-Bin Guide** at ClearStreamRecycling.com

Get the How To Lend-A-Bin Guide

- Write a successful grant proposal.
- How to set up and service events.
- Secure additional funding with Billboard advertising signs.
- Call us for examples of successful Lend-A-Bin programs in your area.

Sort and Save Redemption Refunds

Container Deposit Laws [CDL] in 10 states, also known as bottle bills, require a minimal deposit to be paid on recyclable cans or bottles. The consumer pays the deposit to the retailer when buying the beverage, and receives a refund when the empty container is returned to a redemption center.

1. Public space recycling is an opportunity to collect bottle bill revenue on containers that are either carried in or purchased during an event.
2. Setting out containers so visitors can donate their beverage containers so the venue receives the redemption money is a great idea.
3. Guests need a place to deposit their beverage containers, and this makes it convenient and normative.

SortMax™ is a versatile 2- 3- or 4-sort recycling station that engages visitors to sort their materials into transparent bags with clearly labeled lids. For example, a **SortMax™** set up as a 4-sort station can source separate three redeemable CDL beverage containers [plastic bottles, aluminum cans, and glass bottles] while leaving the fourth bin for trash collection and anything else. When full, the **SortMax™** station be serviced on site or wheeled to the back of the house to consolidate the sorted materials for redemption. Get ready to Sort and Save.



Real Economics



Economic benefits include greater diversion, avoided disposal costs, streamlined operations and cleaner events.



Sponsorship Banners on ClearStreams displays provide new sources of advertising revenue for events and venues. Billboards & Single Banners provide displays up to 12ft² (25ft² double sided). stations.



“The ClearStream System is very easy to set up, very easy to operate, and people really understand it. It not only helps the environment, it helps keep the venue clean.”

Real Engagement



Transparent Containers create higher diversion by showing visitors exactly what to do (and not to do): until their behavior becomes the norm.



“ClearStream success does not rely on someone having to read anything. It works due to visual recognition. People quickly see that the one bag is for recyclables, and the other for trash. Without any education, event attendees properly sort their discards.”



When visitors take pride in recycling, they set an example for their peers that creates a greener event brand and greener community legacy.

Real Environment



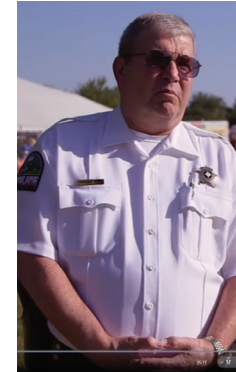
If visitors can't see what's going into the recycling bins, there is no clear environmental awareness.

ClearStream creates Enviro-Mentality, as defined by Oxford Dictionary:

“Awareness of environmental issues and sense of responsibility to the natural world.”



“All the people involved with the Sheryl Crow tour, from setup to teardown participate in recycling thanks to ClearStream. Their quick and easy setup, compact size, and easy-to-read containers make recycling easy for everyone... After all, recycling is everybody's responsibility.”



“It gives us the ability to view that item without having to go into it or to secure an area completely.”

– Chief of Police, Cherry Valley, IL

“Remove trash receptacles from areas. Additionally, install clear trash receptacles so that staff can better monitor items that go into the bins.”

– Dept. of Homeland Security Security and Resiliency Bomb Threat Guidance

See last page for offer on Portable ClearStreams and Permanent SortMax™ Stations